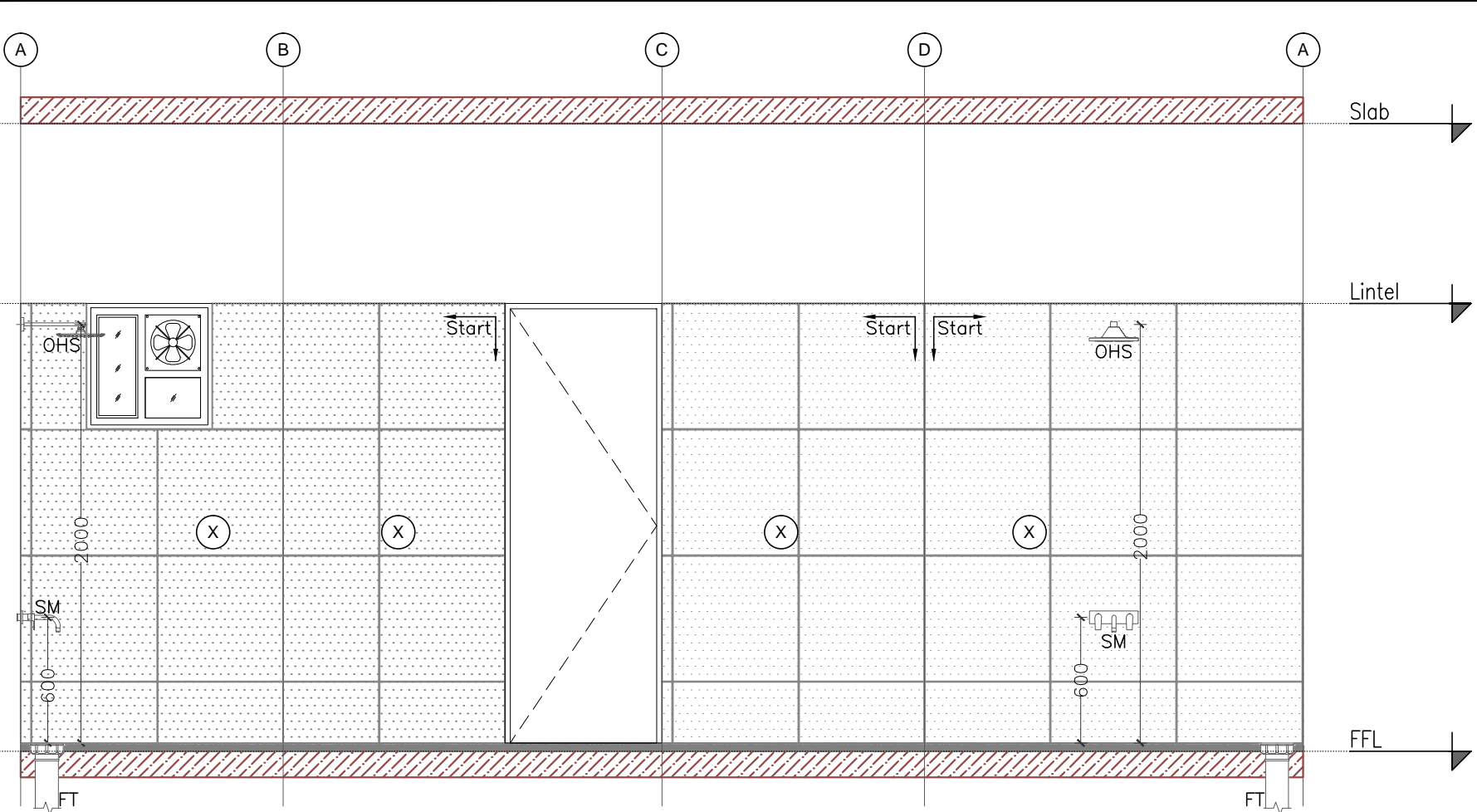
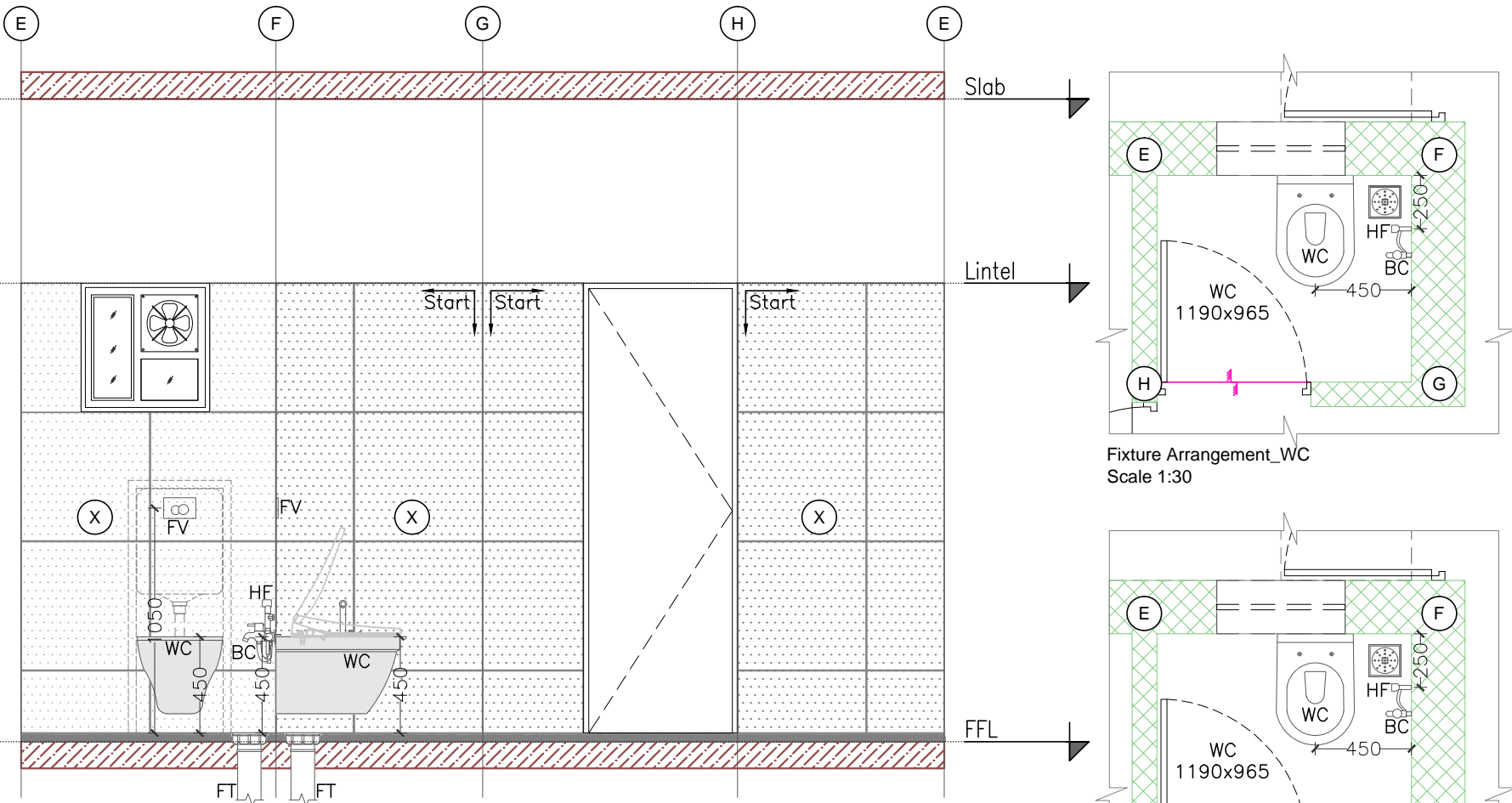


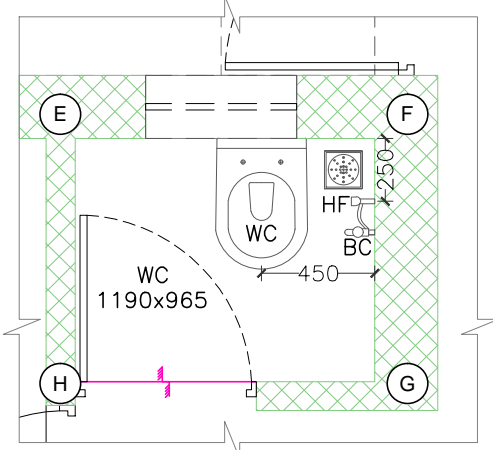
LAST SAVED BY: kpatel 21/2/25 4:08 PM
PLOTTED BY: KAJAL A. PATEL
This drawing is property of Mamta Shah & Associates. Without our prior consent, it must be neither copied nor made available to third parties, nor must it be used by the recipient or third parties for the purpose other than for which it is meant.



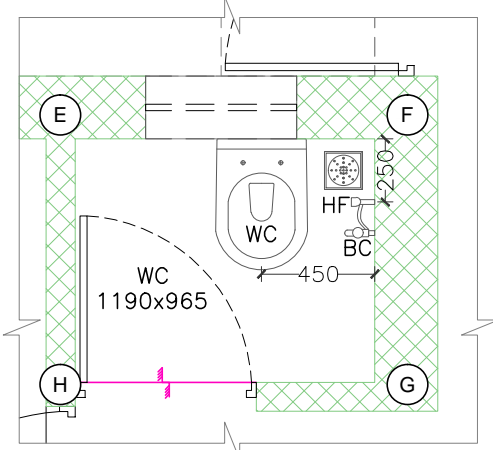
Elevation A-B-C-D-A
Scale 1:30



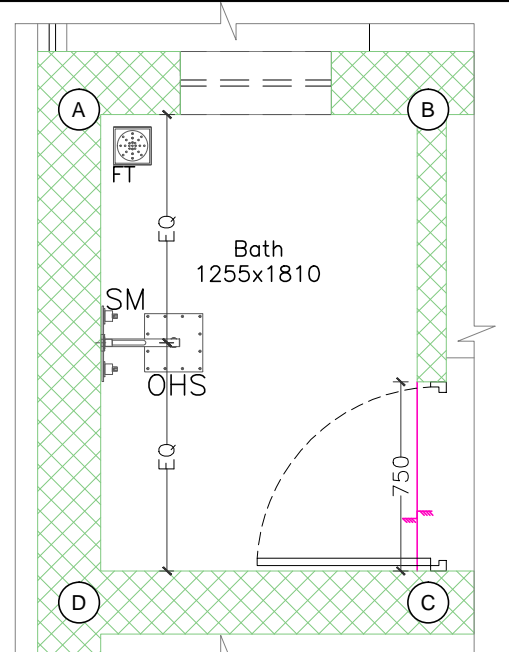
Elevation E-F-G-H-E
Scale 1:30



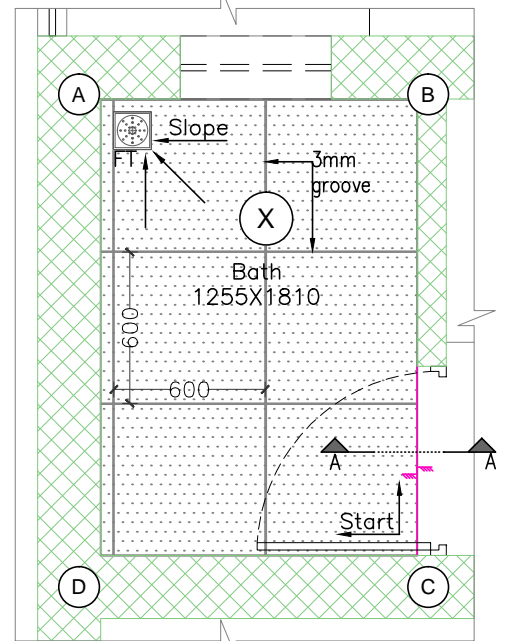
Fixture Arrangement_WC
Scale 1:30



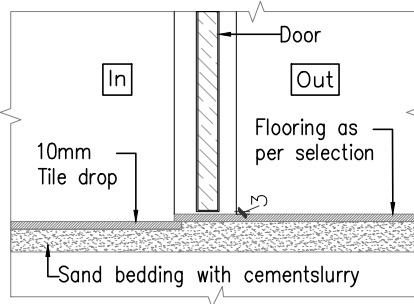
Fixture Arrangement_WC
Scale 1:30



Fixture Arrangement_Bath
Scale 1:30



Flooring Layout_Bath
Scale 1:30



Section A_A
Scale 1:10

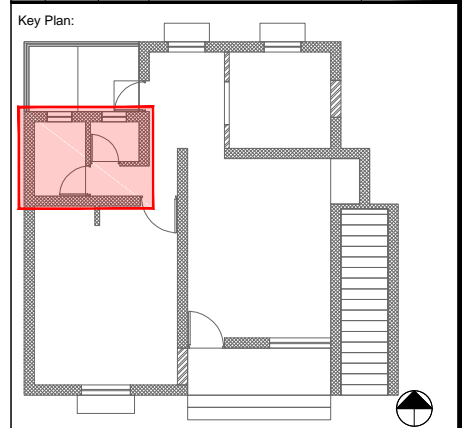
Schedule of Tiles	
(X)	Type: Vitrified tile Size: 600X600 mm Location: Wall dado & Flooring

Legend	
Start	Start Point
Tile Drop	Tile Drop

Abbreviations	Symbol	Description
EWC		European water closet
HF-BC		Health Faucet-Bib Cock
FT		Floor trap
FV		Flush Valve
Fixtures as per selection sheet		

Hatch Legend	
	Existing Wall
	Flooring Tiles & Wall dado
	Sand bedding with cement slurry
	Existing RCC Structure

Rev	Date	Issued	Issued to	Issued for	Author
R3	22-02-25	SC/PR	GMDC	Tender	KBP
R2	01-03-24	SC/PR	GMDC	Tender	KBP
R1	27-09-23	SC/PR	GMDC	Tender	KBP
R0	11-07-23	SC/PR	GMDC	Tender	KBP



Project: **GMDC Township Development**

Drawing: **Toilet Detail**
C Type Quarters
Sheet 01

Drawing Code: **2310_ARC_TD_18_R3**

Print Size: **A3** Scale: **As Mentioned**

File Title: **2310_ARC_TD_18_R3**

Project Code: MSA 2310	Project Type: ARC	Location: Ambaji
Print Date: 21-Feb-25	Drawn By: K Patel	Checked By: K Patel
		Approved By: M Shah

Client: **GUJARAT MINERAL DEVELOPMENT CORPORATION**

MAMTA SHAH & ASSOCIATES
Architects & Interior Designers
C-12, Chanakyapuri Society,
Chanakyapuri, New Sarna Road,
Bandra
Ph. No. +91 985 2715267 / 2710967
mamta@msain.com / www.msain.com